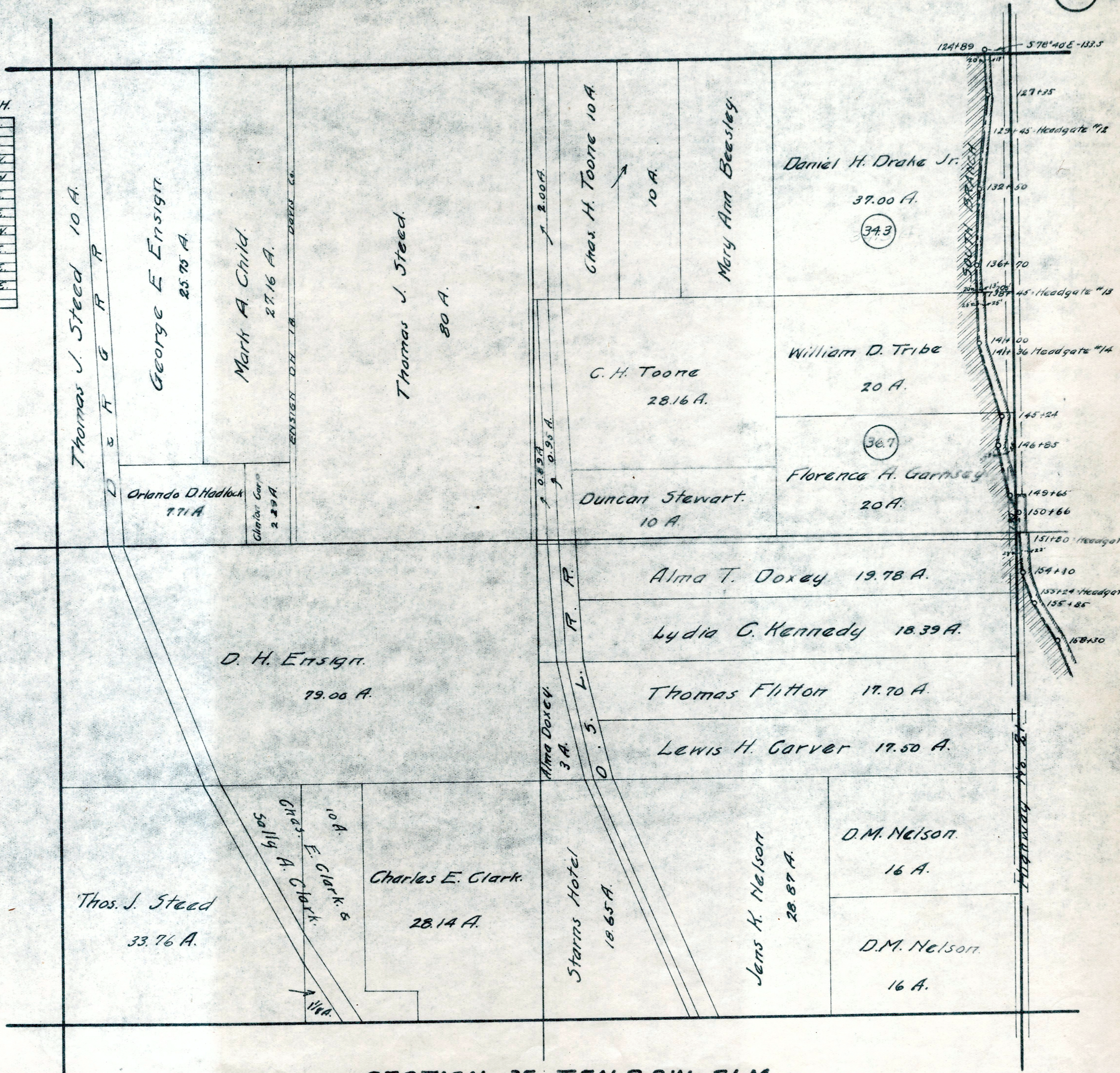


SOUTH BRANCH.

Station	Bearing
124+89	52°-33'E.
127+35	55°-20'W.
132+50	52°-46'W.
136+70	51°-51'E.
141+00	516°-24'E.
145+24	56°-55'W.
146+85	512°-38'E.
149+65	529°-12'E.
150+66	53°-25'E.
154+10	



SECTION 35 - T.5N. R. 2W. S.L.M.